



# 1992 - 1996 Chevy Caprice

Part # 40271 - 40272 - 40273



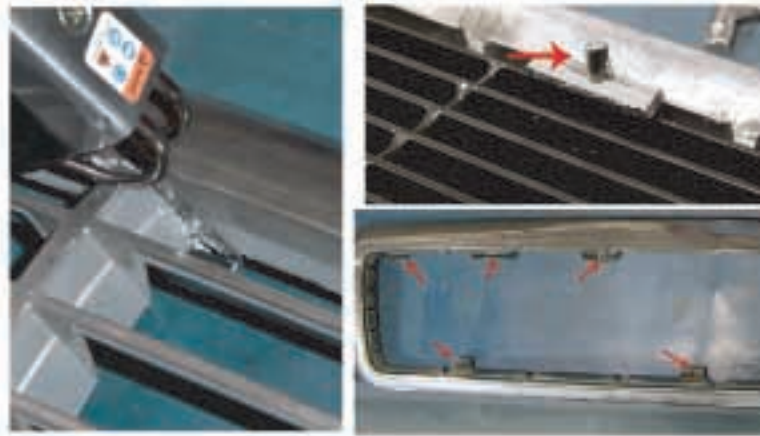
## Hardware

6 - #6 x 1/2

1 - Mounting Tabs



**Step-1** Remove shell from the vehicle by removing the (6) torx screws. Tape the outer chrome area to protect it from scratches.



**Step-2** Using a cutoff wheel or hacksaw carefully cutout the vertical and horizontal bars as shown. Note: Do not cut out the tabs (6) that have the screw holes. Cut around these areas as shown. Also leave the (2) tabs which have the alignment pins attached.



**Step-3** Grind the areas just cut so the inside of the grill shell is smooth. Note: To enhance the appearance of the billet grille, paint the area just ground black.



**Step-4** Next, remove the protruding rib on the top center alignment tab as shown.



**Step-5** Carefully clamp the grille in position so the polished surfaces of the grille are flush with the grill shell. Mark and drill the center location of the rods and attach using the supplied hardware.



**Step-6** When attaching the bottom center rod, use the spacer provided as a clamp to hold the shell and the grille together.

**Step-7** Remove the tape and re-attach the grille assembly to the vehicle

NOTE: Please adjust horizontal blades if irregular. This is the result of shipping and handling outside of Carriage Work's control.

Also Carriage Works Inc. recommends applying a high quality automotive wax to maintain the original appearance.