



1997 - 2002 Dodge Dakota

Part # 40581 - 40582 - 40583



For installation of billet grilles that require cutting of the stock shell, proper tools, knowledge and skill are needed. Carriage Works is not responsible for care & accuracy of the installation, only for Fit & Finish of its products. Use a qualified installer or contact original vendor for references to complete all instructions.

Hardware

1/4 x 20 x 3/4 Sock cap screw

1/4 x 20 Saf-t-nut

4 - 4058 - Bracket (Long)

4 - 4058 - Bracket (Short)

1- Short and 1 - Long Hood Release Extension

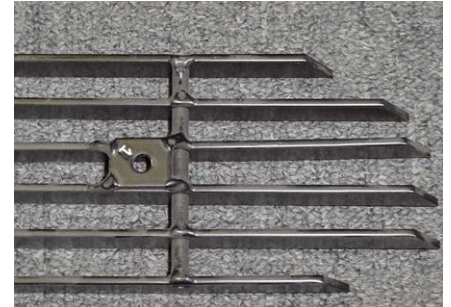
1 - 8x5/8 screw



Step 1 Remove factory grille shell from truck. Lay face down on padded surface to keep from damaging finish.



Step 2 Using a grinder remove the plastic welds which hold the louvered section in place. This will allow you to remove all louvers.

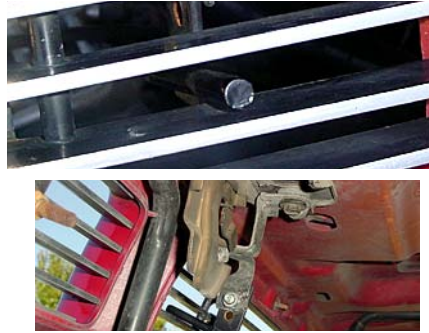


Step 3 Looking at the Carriage Works billet grille, each individual grille will be stamped with a number on the back of the tabs. Placement will be as follows:

- 1-Driver side upper
- 2-Passenger side upper
- 3-Driver side lower
- 4-Passenger side lower



Step 4 Insert each billet grille from the front. Each grille will have two tabs welded in place for securing grille in place. Using brackets supplied you will attach the grille in place with 1/4-20 bolts and nuts. There are 4 long brackets and 4 short brackets which are very similar in size so use caution to distinguish between the two. **NOTE** : Use long brackets towards the center of the grille, and the short brackets towards the outer edge. Repeat this process for each billet grille section.



Step 5 (1997-1998) You will now need to install the hood release extension by clamping the extension onto the secondary hood release with the rod pointing toward the front. Mark and drill 1/4" holes and bolt in place. The extension will protrude just beyond the billet grille. (1997-1998) Remount factory shell with billet inserts onto truck. **For 1999 & later see step 6.**

Step 6 (1999-2004) If your vehicle falls in these years skip step 5. Install the hood release by clamping the extension onto the hood release with the rod pointing downward and toward the front of the truck. Drill a 1/4" hole thru the factory hood lever & attach with supplied bolts. Attach the long bracket using the factory hole in the tube frame so the rod is between the bracket and the tube frame and tighten the bracket in place.



NOTE: Please adjust horizontal blades if irregular. This is the result of shipping and handling outside of Carriage Work's control.

Also Carriage Works Inc. recommends applying a high quality automotive wax to maintain the original appearance.