



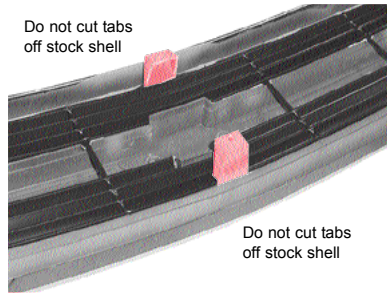
1995-97 S-10 Blazer Flush Headlamps

PART# 40801 - 40802 - 40803

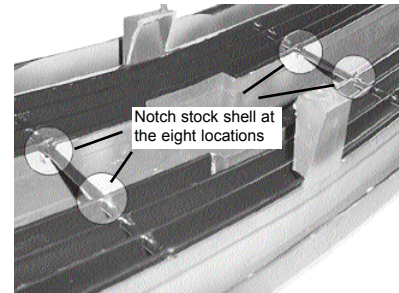
Hardware 8 - 1/8" Pop Rivets



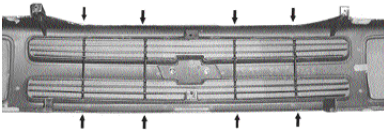
STEP 1 Remove stock grille shell from vehicle. Then you can tape off the front of the shell using masking tape or by laying grille shell on a protective work surface such as a blanket to prevent any scratches to grille shell.



STEP 2 Next cut the center sections of stock grille shell out. You need to leave the 2 center tabs shown in red above. Then file edges smooth with grille shell. See picture is step 1.
NOTE: DO NOT CUT--LEAVE THE 2 CENTER TABS ATTACHED TO STOCK GRILLE SHELL



STEP 3 Next knotch stock grille shell at the 8 locations shown above. Knotch 1/4" deep to allow billet grille to set flush with front of shell.



STEP 4 Attach Billet Grille at the 8 locations with 1/8" pop rivets top & bottom of grille shell.

STEP 5 Re-attach grille shell to vehicle. Installation is complete.

NOTE: Please adjust horizontal blades if irregular. This is the result of shipping and handling outside of Carriage Work's control.

Also Carriage Works Inc. recommends applying a high quality automotive wax to maintain the original appearance.



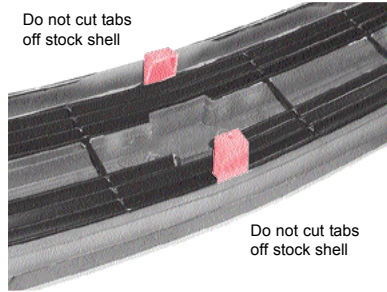
1995-97 S-10 Blazer Flush Headlamps

PART# 40801 - 40802 - 40803

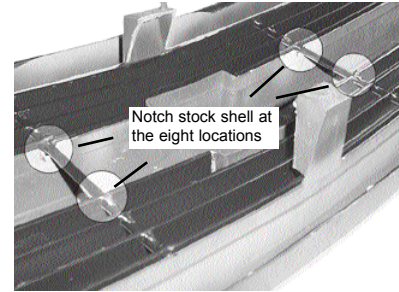
Hardware 8 - 1/8" Pop Rivets



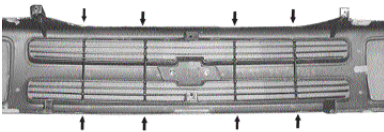
STEP 1 Remove stock grille shell from vehicle. Then you can tape off the front of the shell using masking tape or by laying grille shell on a protective work surface such as a blanket to prevent any scratches to grille shell.



STEP 2 Next cut the center sections of stock grille shell out. You need to leave the 2 center tabs shown in red above. Then file edges smooth with grille shell. See picture in step 1.
NOTE: DO NOT CUT--LEAVE THE 2 CENTER TABS ATTACHED TO STOCK GRILLE SHELL



STEP 3 Next knotch stock grille shell at the 8 locations shown above. Knotch 1/4" deep to allow billet grille to set flush with front of shell.



STEP 4 Attach Billet Grille at the 8 locations with 1/8" pop rivets top & bottom of grille shell.

STEP 5 Re-attach grille shell to vehicle. Installation is complete.

NOTE: Please adjust horizontal blades if irregular. This is the result of shipping and handling outside of Carriage Work's control.

Also Carriage Works Inc. recommends applying a high quality automotive wax to maintain the original appearance.