



1999-01 GMC Sierra & 2000-01 Yukon & Yukon XI

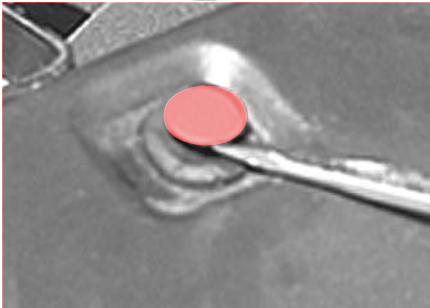
Part # 40981 - 40982 - 40983

For installation of billet grilles that require cutting of the stock shell, proper tools, knowledge and skill are needed. Carriage Works is not responsible for care & accuracy of the installation, only for Fit & Finish of its products. Use a qualified installer or contact original vendor for references to complete all instructions.



Hardware

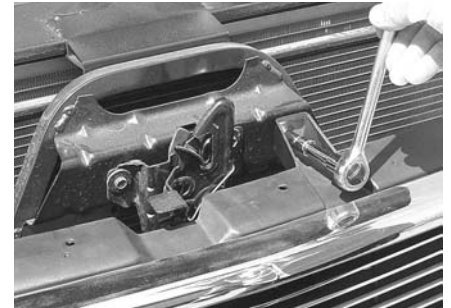
1. 4 - 1/4-20 x 3/4" Soc Cap Screw
2. 4 - 1/4-20 loc-Nuts
3. 2 - #8 x 5/8" Screw
4. 2 - U-Clips
5. 4 - Rivets
6. 4 - Long Brackets (YUKON)
7. 4 - Short Brackets (SIERRA)



STEP 1 Remove the top radiator cover by using a flat tool and prying up under the head of the plastic connectors



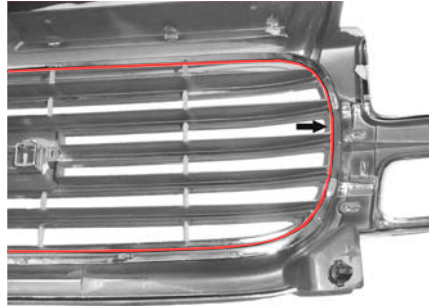
STEP 2 Using a phillips head screwdriver, turn the top 4-connectors 1/4 turn counterclockwise and slightly pull outward. Repeat the same procedure on the lower 2 connectors.



STEP 3 Remove the 10mm. bolt on the right side of the hood release.

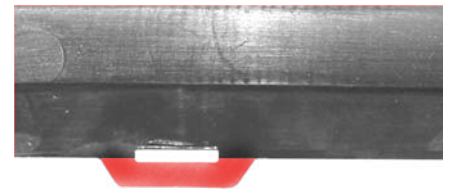


STEP 4 Grasp the corner of the grille shell next to the parking lights and pull straight out. Next, lay a protective cover over the table that will be used and place the grille shell on it.

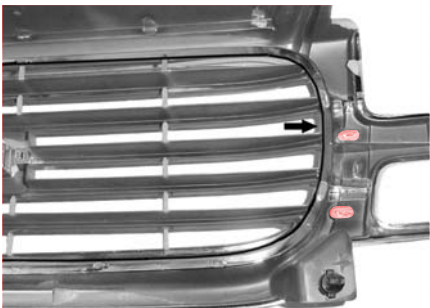


STEP 5 (1999-01 GMC SIERRA & HEAVY DUTY). Using a saw or cut-off wheel, cut the inner shell out leaving approximately 1/8" of material. Use the red line as a guide, shown above.

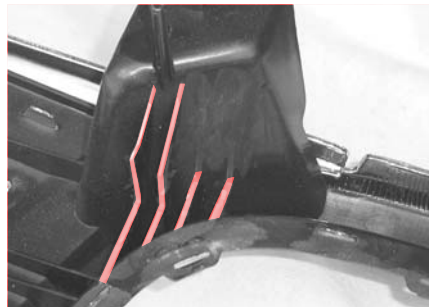
NOTE: IF YOU HAVE A YUKON, YUKON XL, OR A SIERRA C-3. WITH THE CHROME GRILL SHELL WITH HONEYCOMB HOLES, SKIP STEP 5 AND GO TO STEP 5A.



STEP 5a (YUKON, YUKON XL, SIERRA C-3). Using a grinder, grind the plastic welds that hold the center of grille in place. After center section is out grind each tab flush with shell shown above in red. There are 17 welds to grind flush



STEP 6 (1999-01 GMC SIERRA & HEAVY DUTY). Using a sander or grinder, grind the small tabs at each end of the grille shell flush with the remaining surface. Then attach (SHORT) brackets to the bottom of billet grille and set in shell from behind. Making sure grille is centered and sitting down against the shell.
NOTE: YOU ONLY NEED TO GRIND THE TABS AT EACH END).



STEP 7 (YUKON, YUKON XL, SIERRA C-3). Next grind the 4-fins in the upper left and right corners, flush with the grille shell. Then attach (LONG) brackets to the bottom of billet grille and set in shell from behind. Making sure grille is centered and sitting down against the shell.



Drill holes

Attach U-clips to brackets



STEP 8 Mark holes for brackets & drill an 1/8" hole. Next place the U-Clip onto the bracket and screw through the hole just drilled into the brackets. Then mark & drill holes for rivets on top of stock grille shell. Fasten rivets after drilling and re-install shell to vehicle.

NOTE: Please adjust horizontal blades if irregular. This is the result of shipping and handling outside of Carriage Work's control. Also Carriage Works Inc. recommends applying a high quality automotive wax to maintain the original appearance.