



# 2003-06 Toyota Tundra Double Cab only

**PART# 42531(Brushed) - 42532(Polished) - 42533(Black) Upper**

After



Before



Hardware

- 12 - 1/4 - 20 x 3/4" Black SS bolts
- 12 - 1/4-20 Nyloc Nuts
- 4 - Lower Brackets
- 2 - Upper Brackets



1 Open hood and remove (2) 10mm. Bolts that hold stock hood release.



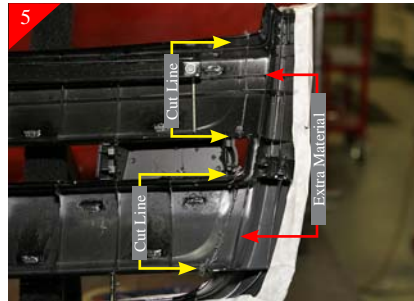
2 Remove (6) 10mm bolts that surround the stock grille shell. Grille shell will be free at this point.



3 With grille shell removed go ahead and tape the face of the grille shell using masking tape so that no damage occurs during install.



4 Next you will be removing the center portion of the stock shell using an air saw or hack saw. Making sure to leave material so you can come back and do finish trimming and sanding. Trim the top portion of the grille shell as shown above, again leave material to sand to.



5 Next you will be cutting the sides of the grille shell. Shown above is the backside of the grille shell after cutting. Take note to leave material as shown above.



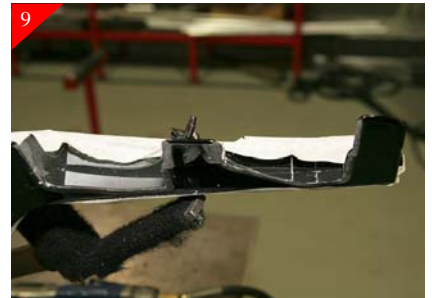
6 Shown above is after cutting the center portion of the stock shell out.



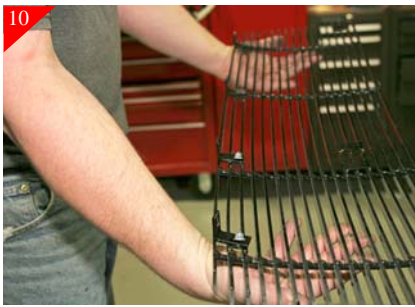
7 Start with sanding the top of the stock shell cut areas smooth with the stock shell as shown above taking care during sanding so as not to scuff the stock shell.



8 Next you will be sanding the sides of the grille shell flush using a sanding block or air sander.



9 Shows completed sanding for the sides of the stock grille shell. You may but not necessary tape off the grille shell and paint all the cut and sanded areas. You will need to let the grille shell dry for approximately 2 hours before you complete the



10 Attach brackets to the bottom of the billet grille as shown above using the supplied 1/4-20 x 3/4" bolts and 1/4-20 nyloc nuts.



11 Place billet grille into opening upside down for the time being as shown above. Then using some vice grips clamp in place. Also check alignment on the face of the grille to make sure that you are flush.



12 Using a scribe mark the hole locations in brackets where they meet the out stock shell as shown above. After marking holes remove the billet grille from opening.



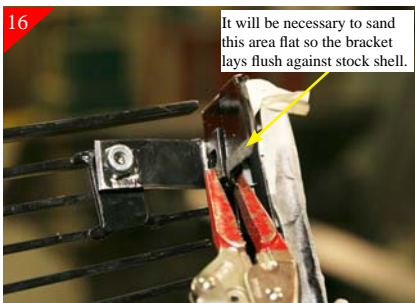
13 Using a 3/16" drill bit, drill in the just marked locations as shown above.



14 Attach bracket to stock shell in the just drilled location using 1/4-20 x 3/4" bolts and 1/4-20 Nyloc nuts as shown above.

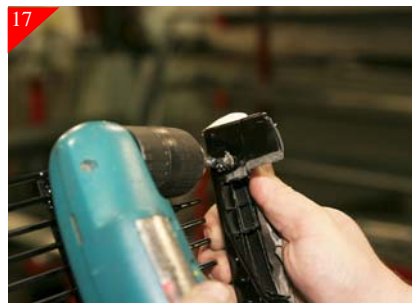


15 Attach billet grille to the just place brackets and attach using 1/4-20 x 3/4" bolts and 1/4-20 nuts. It will be necessary to use a open end wrench to tighten bolts.



It will be necessary to sand this area flat so the bracket lays flush against stock shell.

16 Attach bracket to top of the billet grille using 1/4-20 x 3/4" bolts and 1/4-20 Nyloc nuts. Then using a pair of vice grips clamp in place as shown above. Using a scribe mark the hole locations in bracket where it meet the stock shell.



17 After marking let the bracket hang down out of the way for drilling. Using 3/16" drill bit, drill in the just marked location as shown above.



18 Trim the plastic ribs using a utility knife that are on the opposite side where top brackets attach, so that the nut will lay flat against shell.



19 Attach brackets to the just drilled area using the supplied 1/4-20 x 3/4" bolts and 1/4-20 Nyloc nuts.



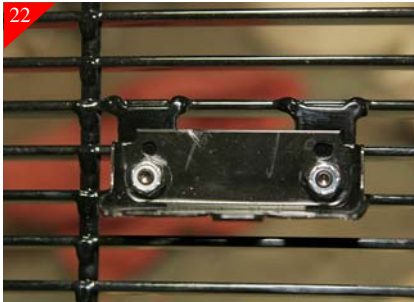
20 Going back the stock center portion of the grille shell that you removed. Remove the stock hood release bracket as shown.



21 Drill the mounting holes in the stock hood release bracket using a 9/32" drill bit as shown above. Caution please use a pair of vice grips or other clamp to hold during drilling.



22



After drilling attach hood release bracket to the billet grille using 1/4-20 x 1/2" as shown.

23



Place grille shell assembly back on vehicle and re-attach. (Ref steps 1 &2) For re-attachment.

Photo shown W/optional bumper grille

30



Completed Installation

For installation of billet grilles that require cutting of the stock shell, proper tools, knowledge and skill are needed. Carriage Works is not responsible for care & accuracy of the installation, only for Fit & Finish of its products. Use a qualified installer or contact original vendor for references to complete all instructions.

NOTE: Please adjust horizontal blades if irregular. This is the result of shipping and handling outside of Carriage Works control. Also Carriage Works Recommends applying a high quality automotive wax to maintain the original appearance.