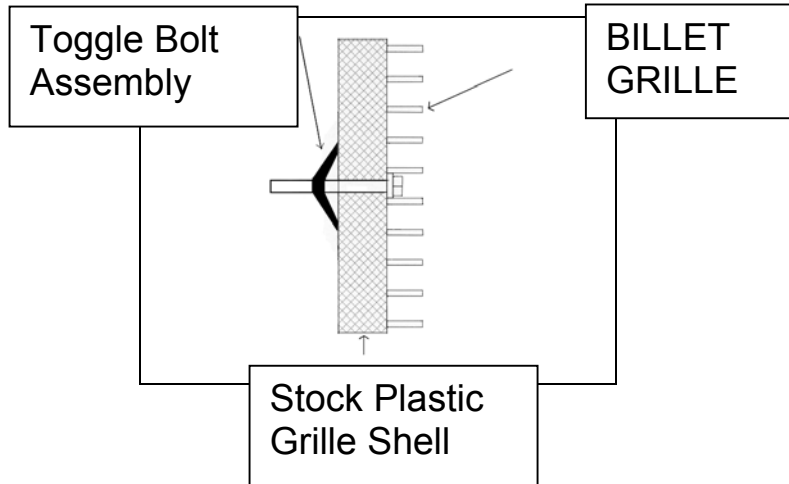




43381/43382/43383
2004-07 Kodiak 4500\5500

Step 1: Center billet grille in opening. Use bolts, nuts and brackets supplied and attach per illustration below.

Step 2: Check to make sure the grille is properly in place and tighten the bolts just enough to hold the grille in place.
DO NOT OVER TIGHTEN as this may cause the grille shell to crack.



Note: Please adjust horizontal blades if irregular. This is the result of shipping and handling outside of Carriage Works control.

For installation of billet grilles that require cutting of the stock shell, proper tools, knowledge and skill are needed. Carriage Works is not responsible for care & accuracy of the installation, only for Fit & Finish of its products. Use a qualified installer or contact original vendor for references to complete all instructions.

NOTE: Please adjust horizontal blades if irregular. This is the result of shipping and handling outside of Carriage Work's control.
Also Carriage Works Inc. recommends applying a high quality automotive wax to maintain the original appearance.