



2009 Dodge Ram

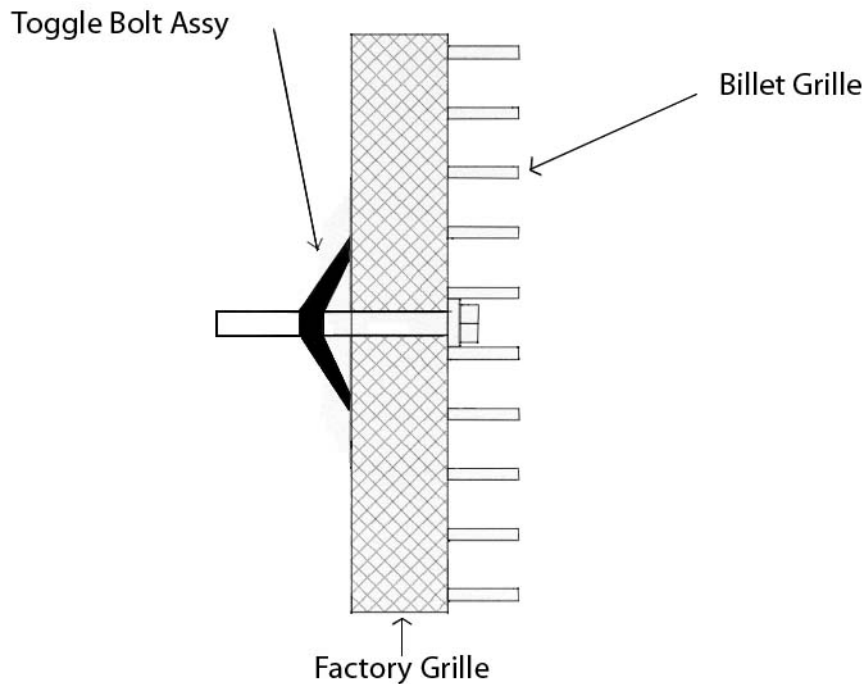
PART# 44321 (Brushed) 44322 - (Polished) 44323 - (Black) Upper

Hardware

14 - 10-24 x 2" Toggle Bolt Assemblies



1. Start by placing the supplied 10-24 x 2" bolt through the mounting tab in billet grille then thread the wing portion of the toggle on the bolt as shown below. Match billet grilles to openings in the stock grille shell. Next simply place the billet grilles into the opening and push the toggle assemblies through stock grille shell. Tighten bolts without over tightening--over tightening could cause the stock grille shell to crack. The use of another regular screwdriver to hold wing portion in place while tightening will aid in the installation process.



Completed Installation

For installation of billet grilles that require cutting of the stock shell, proper tools, knowledge and skill are needed. Carriage Works is not responsible for care & accuracy of the installation, only for Fit & Finish of its products. Use a qualified installer or contact original vendor for references to complete all instructions.

NOTE: Please adjust horizontal blades if irregular. This is the result of shipping and handling outside of Carriage Works control. Also Carriage Works Recommends applying a high quality automotive wax to maintain the original appearance.