



# 2010 Toyota Tundra

## Bumper Grille 3pc

**PART# 44641 (Brushed) 44642 - (Polished) 44643 - (Black) Bumper 3pc**

After

Shown with Upper Main Grille Part#44622 & 4463 Machined Hood Insert



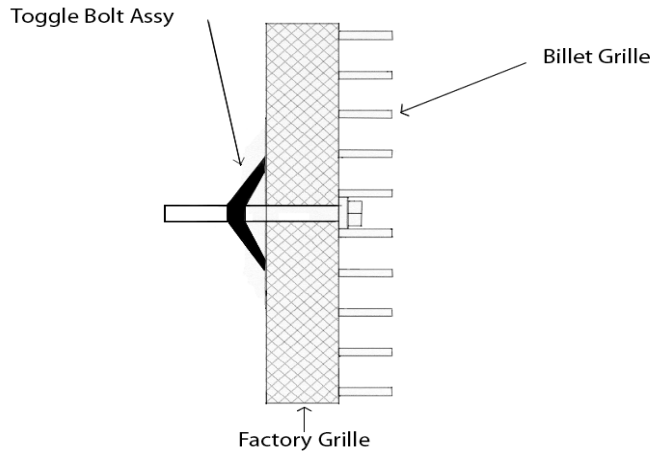
Shown with optional Bumper Part#44642

Hardware

7 - Toggle Bolt Assemblies



Start by opening the hood of your vehicle. Now locate the toggle bolt assemblies. Next place the bolt portion of the toggle bolt through the mounting holes in bumper grilles. Loosely attach the wing portion to the just placed bolts. The 2 outside grilles will use 2 toggle bolt assemblies per grille and the middle or center grille will use 3 assemblies. Now place one of the grilles into the opening. While reaching from the top turn the wing portion horizontal so that it passes through then turn back vertical so that it catches the plastic of the bumper opening. Tighten bolts without over-tightening bolts. (See diagram below).



Completed Installation

For installation of billet grilles that require cutting of the stock shell, proper tools, knowledge and skill are needed. Carriage Works is not responsible for care & accuracy of the installation, only for Fit & Finish of its products. Use a qualified installer or contact original vendor for references to complete all instructions.

NOTE: Please adjust horizontal blades if irregular. This is the result of shipping and handling outside of Carriage Works control. Also Carriage Works Recommends applying a high quality automotive wax to maintain the original appearance.