



2011 Toyota Tacoma

Bolt Over

PART# 44961 (Brushed) 44962 - (Polished) 44963 - (Black) Upper
Part# 44971 (Brushed) 44972 - (Polished) 44973 (Black) Wings(2Pc)



Hardware

- 4 - 10-24 x 2" Toggle Bolt Assemblies
- 4 - U-Clips
- 4 - #8 x 5/8" Phillips Head

1. Start by opening the hood on your vehicle. Now place the supplied 10-24 x 2" bolt through the mounting tab in billet grille then bolt goes through bracket and then thread the bolt onto the wing portion (Fig B). Tighten bolts without over tightening--over tightening could cause the stock grille shell to crack. Note: A drop of red/blue loctite on the bolt threads with significantly reduce the chance of bolts backing out due to road vibrations.

2. Place wing billet grilles into place and center. Then using a scribe mark the locations of the holes. Remove billet grilles and drill a 3/16" hole in each of the marked locations. After drilling place the wing billet grilles back into opening and center. Then attach grilles by placing u-clips on the backside of the stock shell and attach with 10-24 x 5/8" Phillips pan head screws as shown. Tighten the bottom screws first and then the top screws. (Fig C)



Fig C

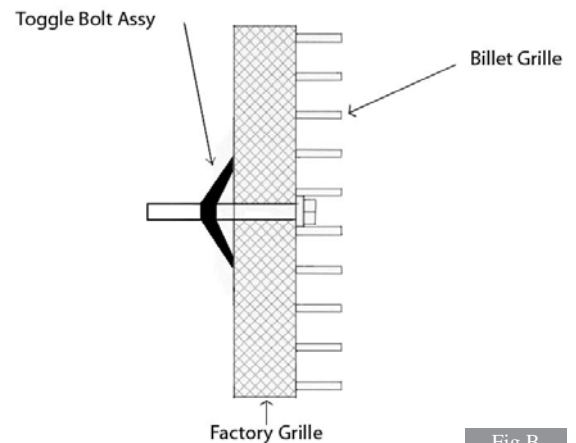


Fig B

Completed Installation

For installation of billet grilles that require cutting of the stock shell, proper tools, knowledge and skill are needed. Carriage Works is not responsible for care & accuracy of the installation, only for Fit & Finish of its products. Use a qualified installer or contact original vendor for references to complete all instructions.

NOTE: Please adjust horizontal blades if irregular. This is the result of shipping and handling outside of Carriage Works control. Also Carriage Works Recommends applying a high quality automotive wax to maintain the original appearance.