

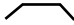


2014-15 Chevy Silverado 1500

Bolt Over Z71 Package Only

PART# 47221 (Brushed) 47222 - (Polished) 47223 - (Black) Upper

Hardware

- 10 - Toggle Bolt 10-24 x 2"
- 10 - Toggle Wings 10-24
- 10 - Brackets  4214-1

After

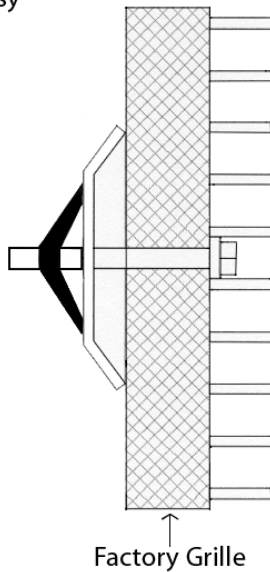


1 Center billet grille in opening. Use supplied hardware and attach per illustration below. Start by placing the supplied 10-24 x 1 1/4" Phillips head bolts through the mounting tabs in billet grille. Place bracket then attach the wing portion to the bolt.

2 Repeat process for remaining attachment points. A drop of blue loctite will insure the bolts wont back out due to road vibration.

Toggle Bolt Assy

Billet Grille



Factory Grille

Completed Installation

For installation of billet grilles that require cutting of the stock shell, proper tools, knowledge and skill are needed. Carriage Works is not responsible for care & accuracy of the installation, only for Fit & Finish of its products. Use a qualified installer or contact original vendor for references to complete all instructions.

NOTE: Please adjust horizontal blades if irregular. This is the result of shipping and handling outside of Carriage Works control. Also Carriage Works Recommends applying a high quality automotive wax to maintain the original appearance.