



# Installation Guide

## Part # 4481

(-1, Brushed; -2, Polished; -3, Black)

This model fits:

## 2011-14 Chevy HD Bolt Over Grille

Thank you for purchasing the CW Grilles **4481**.

Installation of Bolt Over Billet Grilles does not require cutting of the stock shell. However, proper tools, knowledge and skill are needed. Do not over-tighten bolts. CW is not responsible for care & accuracy of the installation, only for Fit & Finish of its products. Use a qualified installer or contact original vendor for references to complete all instructions.

### Hardware Included

- (8) 10-24 X 2 PHILLIPS BOLT
- (8) 10-24 TOGGLE WING

### Brackets Included

- (8) B-4214-1 [4481-1] BRACKET

**STEP 1** Start by opening the hood on your vehicle and removing the plastic core support cover. This can be done by removing the (10) plastic push pull rivets (Fig A).

**STEP 2** Use supplied hardware and attach per illustration below. Start by placing the supplied 10-24 x 2" phillips bolt through the mounting tabs in billet grille.

**STEP 3** Place bracket onto bolt, then loosely attach the toggle wing portion to the bolt. Repeat process for remaining attachment points.

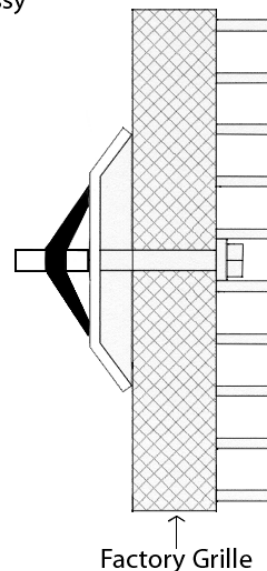
**STEP 4** Place billet grille into stock opening and center. Push the toggle bolt wing and bracket through the stock grille. Hand tighten bolts, and make any necessary adjustments before fully tighten the grille in place. Do not over tightening bolts. Repeat process for remaining grilles.

**NOTE** A drop of red or blue Loctite on the bolts will insure the bolts won't back out due to road vibration.

### Installation diagram



Toggle Bolt Assy



Billet Grille