



Installation Guide

Part # 4488

(-1, Brushed; -2, Polished; -3, Black)

This model fits:

2011-14 GMC HD Bumper Grille

Thank you for purchasing the CW Grilles **4488**.

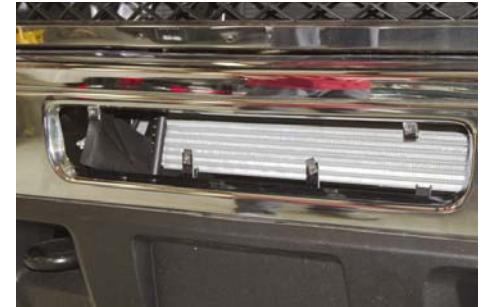
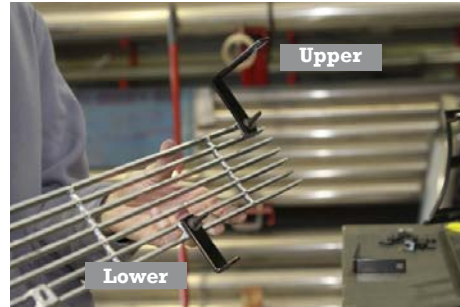
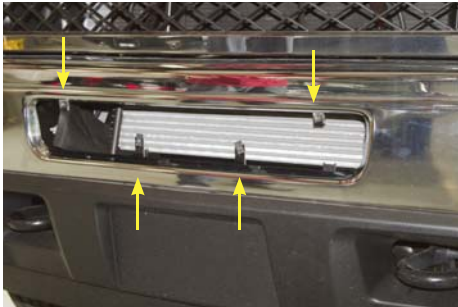
For installation of billet grilles that require cutting of the stock shell, proper tools, knowledge and skill are needed. CW is not responsible for care & accuracy of the installation, only for Fit & Finish of its products. Use a qualified installer or contact original vendor for references to complete all instructions.

Hardware Included

- (2) 1/4 WASHERS
- (8) 10-24 X 1 PHILLIPS BOLT
- (8) 10-24 U-NUTS

Brackets Included

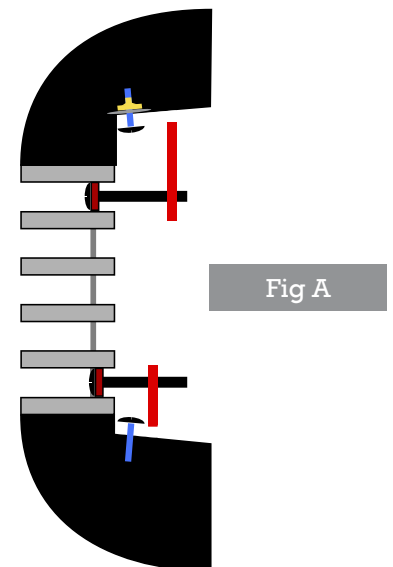
- (2) B-4488-1 BRACKETS
- (2) B-4488-2 BRACKETS



STEP 1 Start by locating the (2) upper mounting locations in the bumper opening, that you will use for installing the supplied brackets. The arrows are pointing to the hole locations. For the bottom (2) bolts you will need to remove (2) plastic rivets holding rubber heat material.

STEP 2 Next place the supplied 10-24 u-nuts on the long end of the upper bracket and the short end of the lower brackets supplied, as shown.

STEP 3 Next attach brackets into bumper opening using supplied bolts and stock locations to secure brackets in place. Place washer on the top side of the upper brackets. Next use the supplied u-nuts as a nut on top. The bend in the brackets go to the inside toward Trans and Intercooler. (See Fig A.)



STEP 4 Place billet grille into opening placing one in first and pushing past the opening and then bring the opposite end in and slide back. Align mounting tabs in billet grille with the brackets and secure with the supplied 10-24 x 1 bolts. Tighten bolts without over tightening.

Note: A drop of red or blue loctite on the bolt threads will significantly reduce the chance of bolts backing out due to road vibrations.

